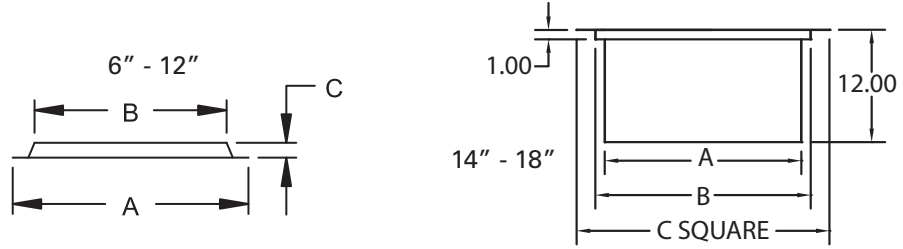
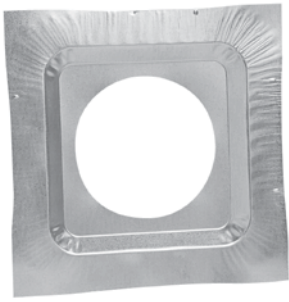
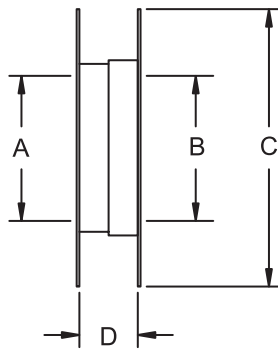


**FIRESTOP ASSEMBLY – TGFSA**

SIZE	6"	7"	8"	10"	12"	14"	16"	18"
A	15.88	16.88	17.88	21.00	23.00	19.00	21.00	23.00
B	12.94	13.94	14.94	16.94	18.94	21.00	23.00	25.00
C	1.00	1.00	1.00	1.00	1.00	25.00	27.00	29.00



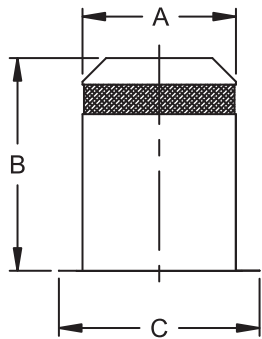
**WALL FIRESTOP – 6" - 12" TGWFSP**



SIZE	6"	7"	8"	10"	12"
A	9.13	10.13	11.13	13.13	15.13
B	9.13	10.13	11.13	13.13	15.13
C	17.00	18.00	19.00	21.00	23.00
D	4.00 to 7.50				

Wall firestop is used to provide the proper clearance for the chimney pipe when passing through a combustible wall.

**INSULATION SHIELD – 6" - 12" TGIS**



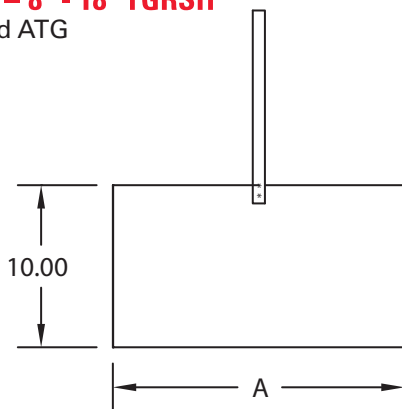
SIZE	6"	7"	8"	10"	12"
A	13.00	14.00	15.00	17.00	19.00
B	18.00	18.00	18.00	18.00	18.00
C	17.00	18.00	19.00	21.00	23.00

Insulation shield must be used anytime the chimney system passes through an attic. TGIS is used to prevent the insulation from coming in contact with the pipe. This part is required on **any** attic pass-through situation, regardless if insulation is present or not.

Note: 14" - 18" insulation shield is not available, since attic installation is not intended for these size.

**RADIATION SHIELD – 8" - 18" TGRSH**

Note: Use with TG and ATG



SIZE	8"	10"	12"	14"	16"	18"
A	13.00	15.00	17.00	19.00	21.00	23.00

12", 14", 16", 18" Used on TG      8" – 16" Used on ATG

Radiation shield is required when 12" and larger diameter chimney pipe passes through a roof.