

Note: Pipe overlaps 1½" when joined together. Therefore, assembled length is 1½" less than listed length.

## DOUBLE WALL BLACK STOVEPIPE

### PIPE SECTION – DWB



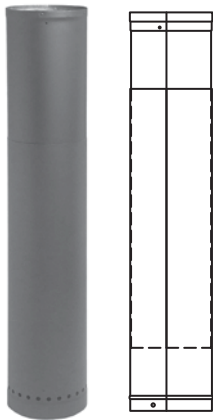
DIA.	LENGTHS			OD
	12"	24"	48"	
6"	X	X	X	7.00
8"	X	X	X	9.00

### ADJUSTABLE LENGTHS – DWB8A & 18A



DIA.	MODEL 8A		MODEL 18A	
	MIN L	MAX L	MIN L	MAX L
6"	3.00	6.00	6.00	16.00
8"	3.00	6.00	6.00	16.00

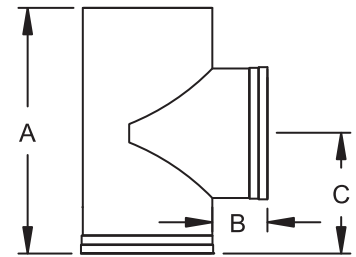
### TELESCOPING LENGTH – DWBTL



DIA.	MODEL TL48		MODEL TL66	
	MIN L	MAX L	MIN L	MAX L
6"	26.00	48.00	36.00	66.00
8"	26.00	48.00	36.00	66.00

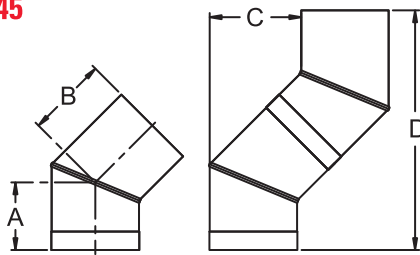
Built-in adapter.

### TEE – W/TEE CAP – DWBT



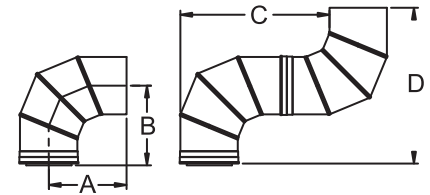
SIZE	A	B	C
6"	13.44	3.00	6.69
8"	15.13	3.00	7.56

### 45° ELBOW – DWB45



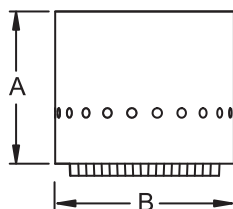
SIZE	A	B	C	D
6"	5.00	4.38	5.75	15.13
8"	4.60	4.80	5.75	15.13

### 90° ELBOW – DWB90



SIZE	A	B	C	D
6"	9.50	9.50	17.50	19.00
8"	9.50	9.50	17.50	19.00

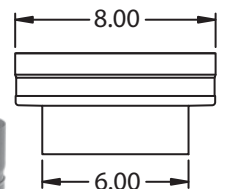
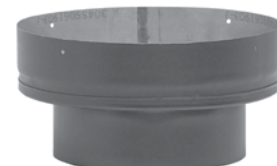
### STOVE TOP ADAPTER – DWBA



SIZE	A	B
6"	6.00	7.00
8"	6.00	9.00

Note: DWBA must be used when installing a Double Wall pipe system, unless starter piece is a telescoping length.

### INCREASER – DWBI-8



SIZE
6.00 TO 8.00