

 AMERIVENT®



P E L L E T
V E N T



AMERICAN METAL®
PRODUCTS

2004

Pellet Vent

Tables of Contents

Introduction	1
Product Description	1
Specifications and Dimensions	2
Pipe Section	3
Painted Pipe Section	3
Seal Sleeve	3
Adjustable Length	4
Elbows	4
Increaser	4
Stove Adapter	5
Tee	5
Tee Support Bracket	5
Wall Band Bracket	5
Ceiling Support	6
Roof Support	6
Chimney Adapter	6
Wall Thimble	7
House Shield	7
Caps	7
Flashings	8
Storm Collar	8
Top Support Plate	9
Typical Pellet Vent Installation	10

A full line of the finest products is yours from American Metal Products.

- AmeriVent** Type B Gas Vent
- Gas Vent Relining Systems
- Gas Vent Connectors
- Pellet Vent
- All-fuel Chimneys
- Chimney Connectors
- Direct Vent

AMPCO Commercial/Industrial Chimneys

Introduction

Today’s exceptionally clean-burning pellet appliances not only represent a major advancement in home heating, they establish a new standard for low-temperature venting efficiency. AmeriVent Pellet Vent meets this challenge with a UL-listed venting system of unsurpassed engineering excellence.

Product Description

AmeriVent Pellet Vent permits installation through the wall, through the ceiling, or into an existing metal chimney. A proven snap-lock coupling system and double-wall construction of stainless steel inside and aluminum-zinc coated steel outside assures safe, rigid installations. For relining masonry chimneys, a 6-foot flexible length is available.

All AmeriVent Pellet Vent pipe sections and key components feature a gasket to control fly ash leakage. For a smooth pipe appearance, a unique seal sleeve is available to hide the pipe joints. Selected components are also available in a powder-coat black finish.

AmeriVent Pellet Vent has a lifetime warranty. This system is proudly presented by American Metal Products, a leader in the venting industry for more than fifty years. This experience is one more reason why we can point with pride to a reputation for unsurpassed product excellence and dependability.



This symbol on the product means the product is listed by Underwriters Laboratories, Inc.

Specifications and Dimensions

Available Pipe Sizes and Lengths

Diameters: 3" and 4"

Lengths: 6", 12", 18", 24", 3', and 5'

Usage

For listed pellet-fueled appliances with continuous flue gas temperatures not exceeding 570° F. May also be used with gas and oil appliances listed for use with Type L Vent systems and where Type B gas vents are permitted.

Material

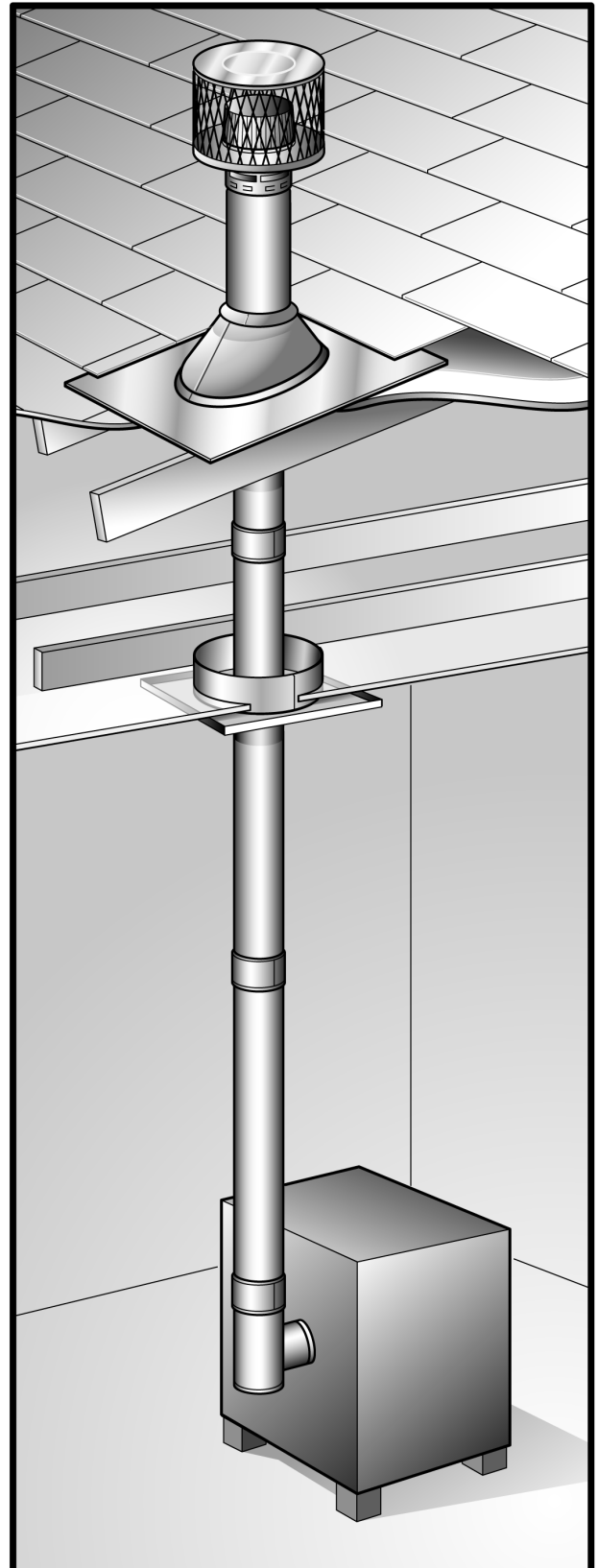
Outer Wall: .018" aluminum-zinc (galvalume) coated steel

Inner Wall: .012 Type 430 stainless steel

Gasket: Braided fiberglass

Clearances to Combustibles

When used as a:	Enclosure	Clearance
Chimney or Vent Connector	Unenclosed	3" clearance
Vent	Enclosed	3" airspace clearance
Masonry Chimney Liner	Enclosed in masonry	Zero clearance between vent and masonry and zero clearance between masonry and combustibles



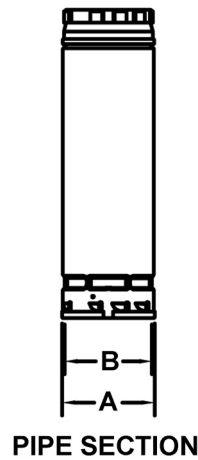
Pipe Section

Lengths: 6", 12", 18", 24", 3', and 5'
 Diameters: 3" and 4"

AmeriVent Pellet Vent pipe and fittings feature rugged, double-wall construction of corrosion-resistant stainless steel and aluminum-zinc (galvalume) coated steel. Snap-lock joints offer faster and easier installations. The factory-installed gasket helps contain fly ash. All pipe is also available painted with high-temperature powder-coat black finish. To order black, add BK to the end of the Part No.

Part No.	Size	A	B
3PSV *	3"	3 ¹ / ₂ "	3"
4PSV *	4"	4 ¹ / ₂ "	4"

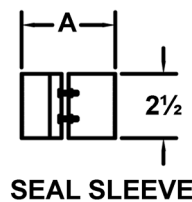
*Add length to complete Part No.



Seal Sleeve

Use to cover joints for enhanced appearance and fly ash control. Galvalume construction matches standard pipe sections. Hardware included. Also available painted powder-coat black. To order black, add BK to the end of the Part No.

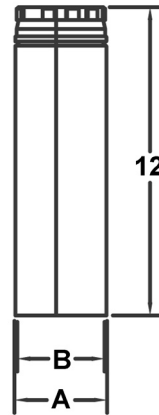
Part No.	Size	A
3PSV-SS	3"	3 ¹ / ₂ "
4PSV-SS	4"	4 ¹ / ₂ "



Adjustable Length

Telescopes onto standard pipe sections for adjustments from 4" to 10". Also available painted powder-coat black. To order black, add BK to the end of the Part No.

Part No.	Size	A	B
3PSV-12A	3"	3 ⁹ / ₁₆ "	2 ¹⁵ / ₁₆ "
4PSV-12A	4"	4 ⁹ / ₁₆ "	3 ¹⁵ / ₁₆ "

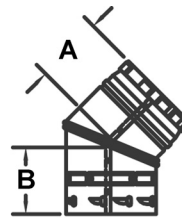


ADJUSTABLE LENGTH

45° Elbow nonadjustable

Use in pairs to go around obstructions. Add pipe section between elbows for additional offset. Also available painted powder-coat black. To order black, add BK to the end of the Part No.

Part No.	Size	A	B
3PSV-45	3"	2 ³ / ₄ "	3"
4PSV-45	4"	3 ¹ / ₁₆ "	3 ⁷ / ₈ "



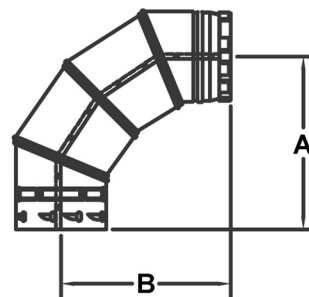
45° ELBOW



90° Elbow nonadjustable

Four-section design provides smooth, low-resistance 90° offset. Also available painted powder-coat black. To order black, add BK to the end of the Part No.

Part No.	Size	A	B
3PSV-90	3"	4 ³ / ₄ "	4 ¹ / ₂ "
4PSV-90	4"	5 ¹ / ₂ "	5 ¹ / ₄ "



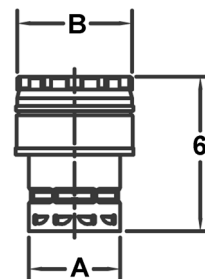
90° ELBOW



Increaser

Use to increase from 3" to 4" vent size.

Part No.	Size	A	B
3PSV-IX4	3" to 4"	3 ¹ / ₂ "	4 ¹ / ₂ "



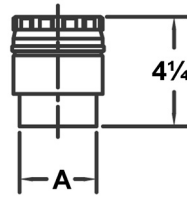
INCREASER



Stove Adapter

For easy connection and sealing between inner wall of vent and appliance collar.

Part No.	Size	A
3PSV-SA	3"	3"
4PSV-SA	4"	4"



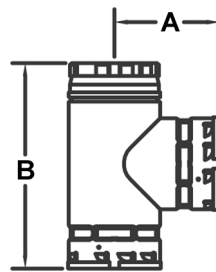
STOVE ADAPTER



Tee

For use as a clean-out. Includes removal tee cap. Also available painted powder-coat black. To order black, add BK to the end of the Part No.

Part No.	Size	A	B
3PSV-T	3"	4 ¹ / ₈ "	7 ⁷ / ₈ "
4PSV-T	4"	4 ⁵ / ₈ "	8 ⁷ / ₈ "



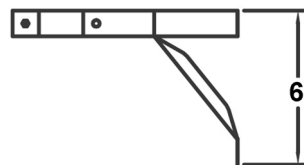
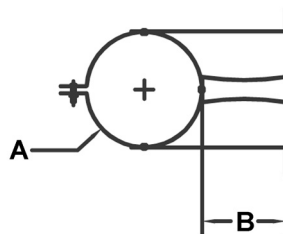
TEE



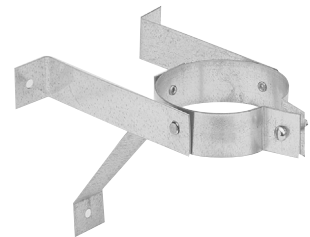
Tee Support Bracket

Use to support Tee. Allows access for clean-out.

Part No.	Size	A	B
3PSV-TSB	3"	3 ¹ / ₂ "	3"
4PSV-TSB	4"	4 ¹ / ₂ "	3 ¹ / ₄ "



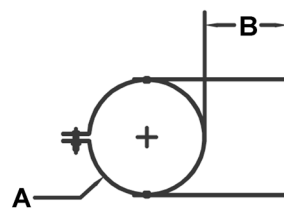
TEE SUPPORT BRACKET



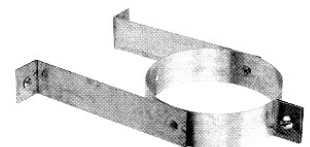
Wall Band Bracket

Provides lateral support for vent and offsets while maintaining clearance from wall.

Part No.	Size	A	B
3PSV-WB	3"	3 ¹ / ₂ "	3"
4PSV-WB	4"	4 ¹ / ₂ "	3 ¹ / ₄ "



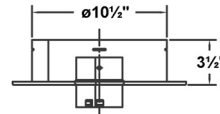
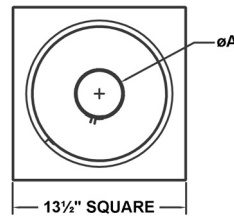
WALL BAND BRACKET



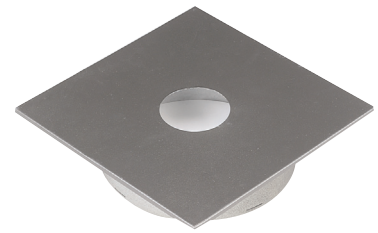
Ceiling Support

Use as a support and firestop when vent passes through a flat ceiling. Four slots accept either nails or (plumber's tape) straps. Interior ceiling surface and Support Clamp painted powder-coat black.

Part No.	Size	A
3PSV-CS-BK	3"	3 ³ / ₄ "
4PSV-CS-BK	4"	4 ³ / ₄ "



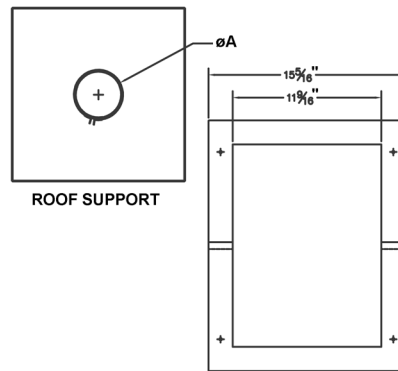
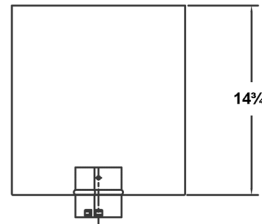
CEILING SUPPORT



Roof Support

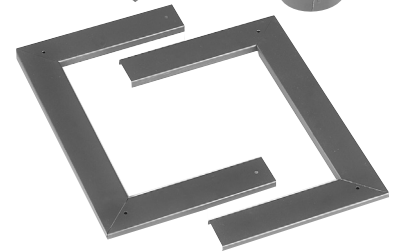
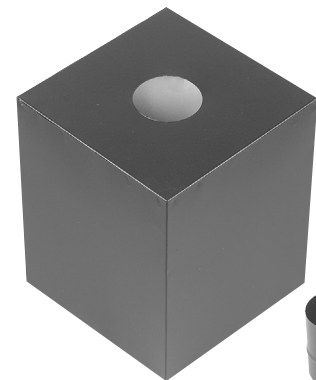
Use as support and firestop in sloped ceiling installations. Includes a Roof Support Trimplate. Support, Trim Plate, and Support Clamp painted powder-coat black. Roof Support Trim Plate fits from flat to 24/12 pitch ceilings.

Part No.	Size	A
3PSV-RS-BK	3"	3 ³ / ₄ "
4PSV-RS-BK	4"	4 ³ / ₄ "



ROOF SUPPORT

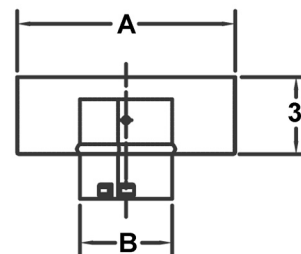
ROOF SUPPORT TRIM PLATE



Chimney Adapter

Use for connection to an existing metal chimney. Supports vent and closes off bottom of chimney inner wall. Powder-coat black finish.

Part No.	Size	A	B
3PSV-CA6-BK	3"	6"	3 ¹ / ₂ "
3PSV-CA7-BK	3"	7"	3 ¹ / ₂ "
3PSV-CA8-BK	3"	8"	3 ¹ / ₂ "
4PSV-CA6-BK	4"	6"	4 ¹ / ₂ "
4PSV-CA7-BK	4"	7"	4 ¹ / ₂ "
4PSV-CA8-BK	4"	8"	4 ¹ / ₂ "



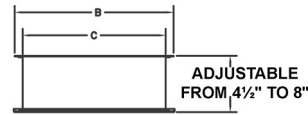
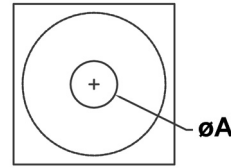
CHIMNEY ADAPTER



Wall Thimble

Provides clearance and firestopping for through-the-wall installations. Powder-coat black painted surface for interior wall.

Part No.	Size	A	B	C
3PSV-WT-BK	3"	3 ⁵ / ₈ "	12"	10 ¹ / ₂ "
4PSV-WT-BK	4"	4 ⁵ / ₈ "	12"	10 ¹ / ₂ "

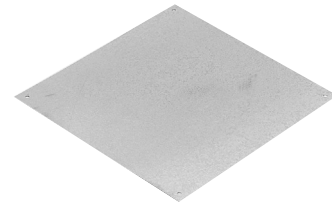
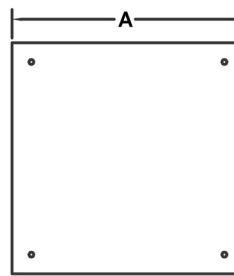


WALL THIMBLE

House Shield

Use as an extension at the bottom of Wall Thimble. Protects house exterior wall from ash stains.

Part No.	Size	A (square)
PSV-HS	3" and 4"	12"

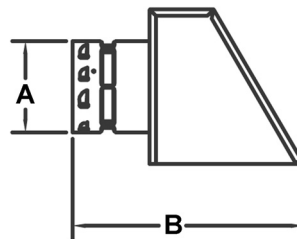


HOUSE SHIELD

Horizontal Cap

Use for horizontal vent termination. All stainless steel construction. Includes bird screen.

Part No.	Size	A	B
3PSV-HC	3"	3 ¹ / ₂ "	8 ¹ / ₂ "
4PSV-HC	4"	4 ¹ / ₂ "	8 ¹ / ₂ "

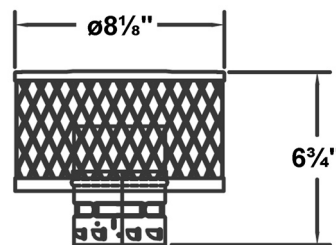


HORIZONTAL CAP

Vertical Rain Cap

Use for either vertical or horizontal vents. All stainless steel construction. Low-restriction design improves efficiency.

Part No.	Size
3PSV-C	3"
4PSV-C	4"

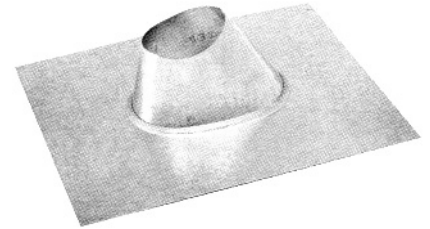
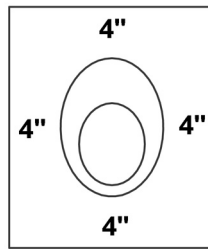


VERTICAL RAIN CAP

Standard Flashing

Fits flat to 5/12 pitch roofs. Double-seamed construction for protection from leakage.

Part No.	Size
3EF	3"
4EF	4"

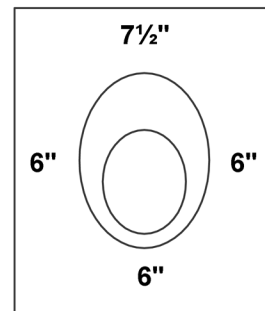


STANDARD FLASHING

FHA Flashing

A standard flashing with a wider skirt for use with the Roof Support.

Part No.	Size
3EFFU	3"
4EFFU	4"

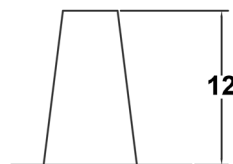
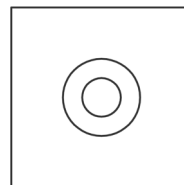


FHA FLASHING

Tall Cone Flashing

Fits flat to 1/12 pitch roofs. Use on flat roofs in snow-packed areas to reduce chances of leakage.

Part No.	Size
3EFT	3"
4EFT	4"



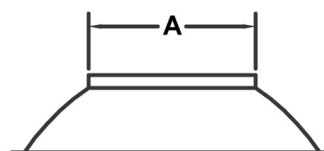
TALL CONE FLASHING



Storm Collar

Use above Flashing or Top Support Plate. Use mastic to seal to vent pipe.

Part No.	Size	A
3ESC	3"	3 1/2"
4ESC	4"	4 1/2"

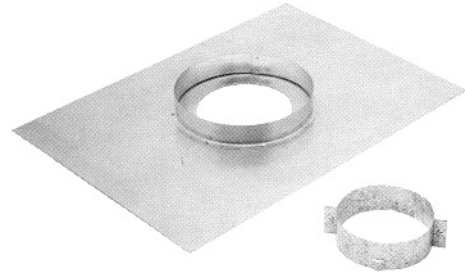


STORM COLLAR

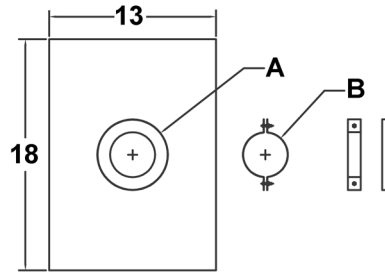


Top Support Plate

Use at the top of a masonry chimney to support pipe sections. Use Storm Collar and Vertical Rain Cap above Top Support Plate (rectangular).



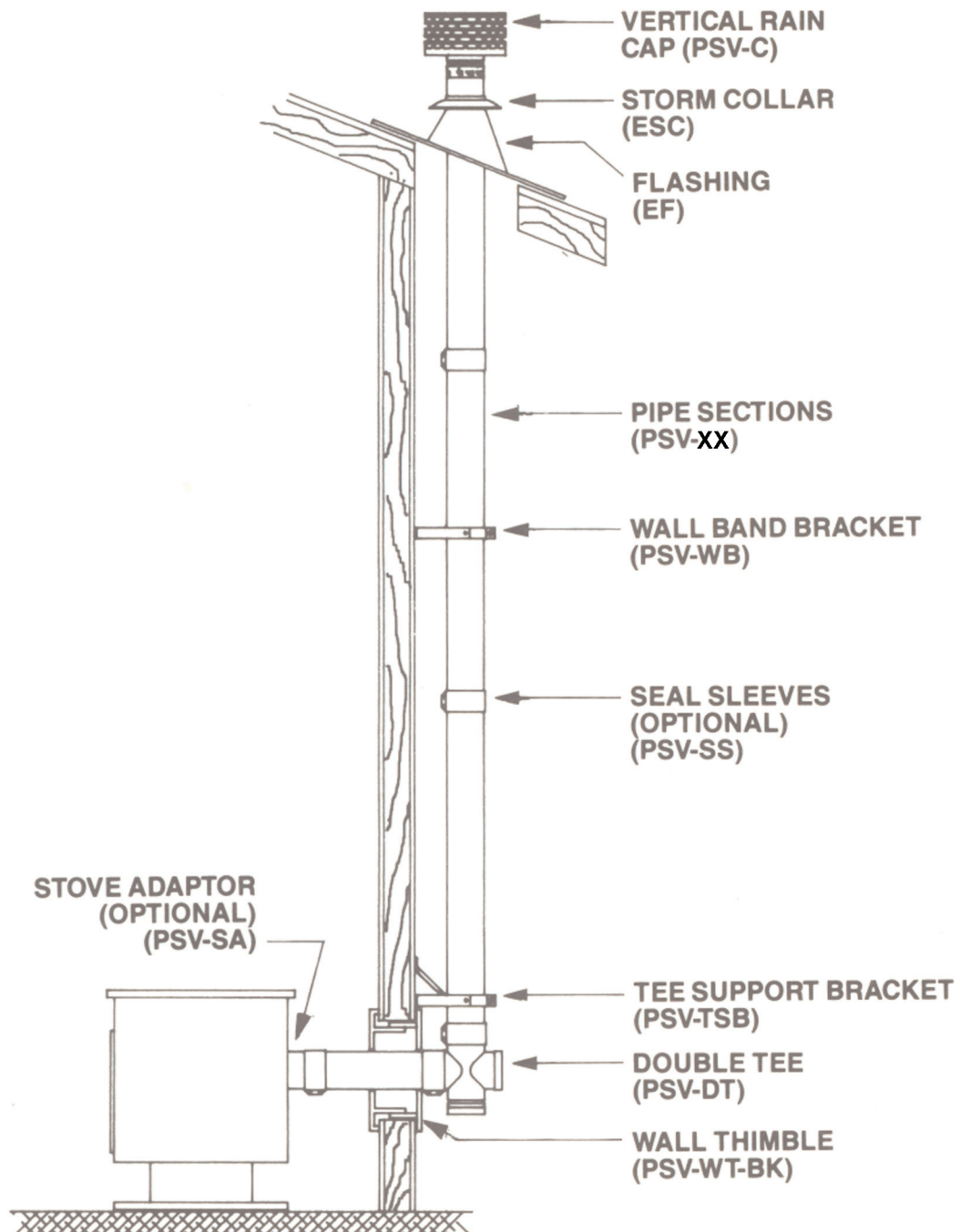
Part No.	Size	A	B
3TSPR	3"	5 ¹ / ₂ "	3 ¹ / ₂ "
4TSPR	4"	6 ¹ / ₂ "	4 ¹ / ₂ "



TOP SUPPORT PLATE

Typical AmeriVent Pellet Vent Installation

Through-the-Wall Vertical Termination





AMERICAN METAL® PRODUCTS

500 East Eighth Street
Holland, MI 49423
800-423-4270
Fax 800-626-3825

www.americanmetalproducts.com