

Note: Pipe overlaps 1" when joined together. Therefore, assembled length is 1" less than listed length.

PIPE SECTION – SW



DIA.	LENGTHS		
	12"	24"	48"
6"	X	X	X
7"	X	X	
8"	X	X	X

TELESCOPING LENGTH – SWTL



DIA.	MODEL TL48		MODEL TL66	
	MIN L	MAX L	MIN L	MAX L
6"	26.00	48.00	36.00	66.00
7"	26.00	48.00	36.00	66.00
8"	26.00	48.00	36.00	66.00

SLIP CONNECTOR – SW 14S



DIA.	LENGTH
6"	14.00
7"	14.00
8"	14.00

45° ELBOW – SW45



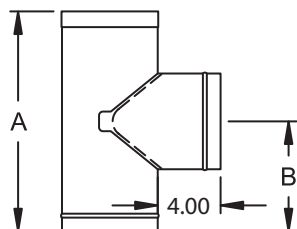
DIA.
6.00
8.00

90° ELBOW – SW90



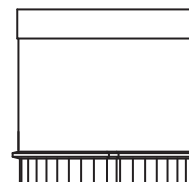
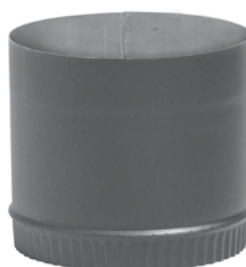
DIA.
6.00
7.00
8.00

TEE W/TEE CAP – SWT



DIA.	A	B
6"	14.00	7.00
8"	16.00	8.00

STOVE TOP ADAPTER – SWA1



DIA.	LENGTH
6"	5.38
7"	5.38
8"	5.38

TRIM COLLAR – SWTC



DIA.
6.00
8.00

INCREASER – SWI8



DIA.	LENGTH
6" to 8"	4.38
7" to 8"	3.75