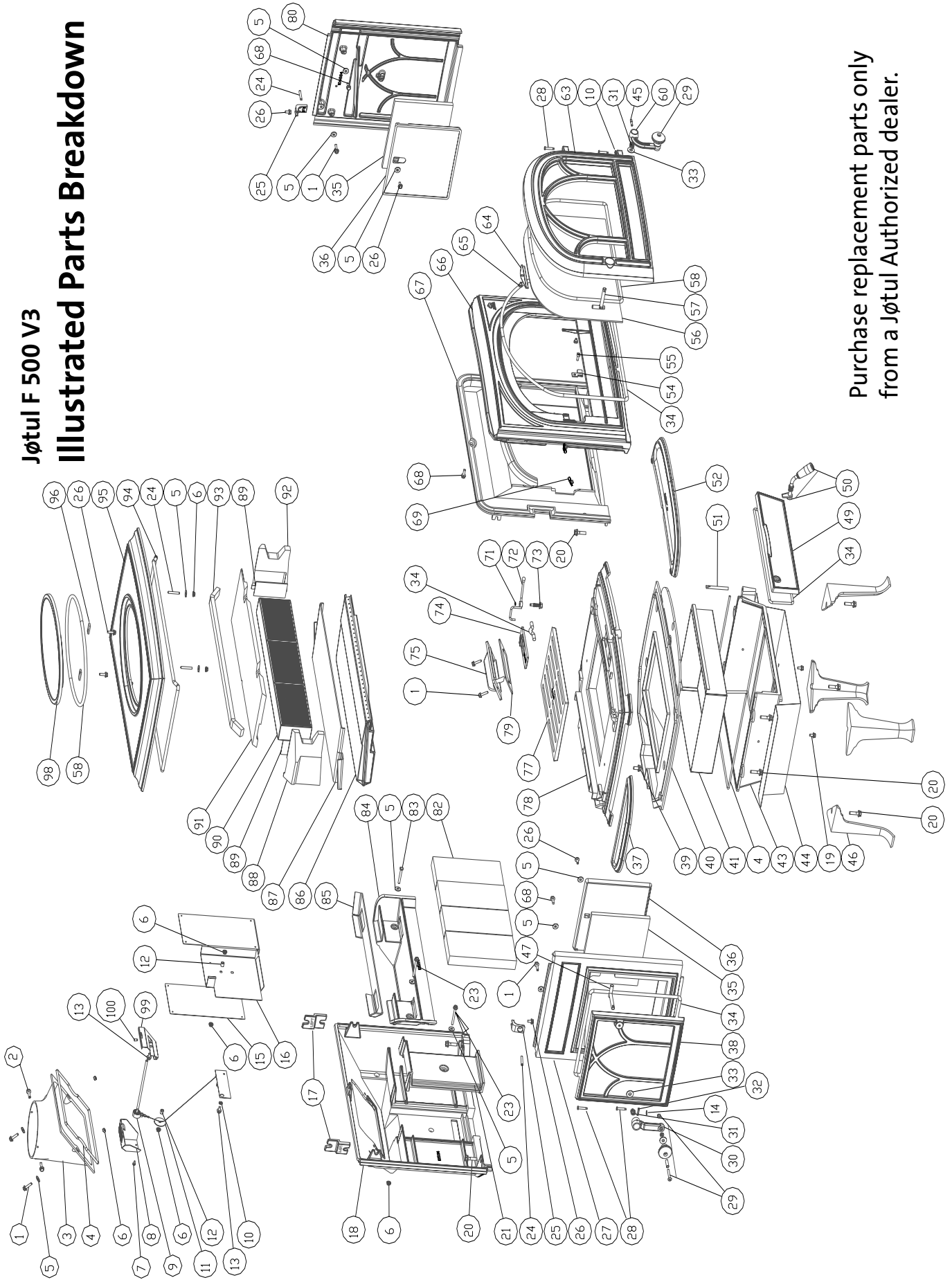


Jøtul F 500 V3 Illustrated Parts Breakdown



Purchase replacement parts only
from a Jøtul Authorized dealer.

F500 V3 Oslo Parts List

Cast Iron Parts	Matte Black	Blue Black Enamel	Brown Majolica Enamel	Cast Iron Parts	Matte Black	Blue Black Enamel	Brown Majolica Enamel
3. Smoke Outlet	10332692	103405	156326	52. Ash Lip, Front	10468792	10468727	10467847
18. Rear Plate	10501492	10501427	10501447	63. Door, Front	10468592	157942	157945
27. Side Plate, Left	10384892	10384827	10384847	66. Front Plate	105019	10501927	10501947
37. Ash Lip, Side	10469092	10469027	10469047	78. Bottom Plate	10384092	10384027	10384047
38. Door, Side	104689	157955	157957	80. Side Plate, Right	10468492	10468427	10468447
46. Leg, Long (8")	101925	101966	10192547	95. Top Plate	104688	10468827	157958
49. Door, Ash	10468292	10468227	10468247	98. Top Cover	10388392	10388327	N/A
1. Bolt, Hex Hd Serr Flange M6 x 25	118019			45. Set Screw, M6 x 25 Hex Drive.....	118070		
2. Screw, M6 x 16, Hex Hd, Self-tap	117120			47. Latch Bolt	126228		
4. Gasket, LD2-250.....	129644			50. Handle, Complete, Ash Door.....	157713		
5. Washer, Fender, M6	120004			51. Ash door Hinge Pin.....	128408		
6. Nut, M6 Serrated Flange plain	117968			54. Latch Keeper Weldment.....	225900		
7. Screw, HWH SMA #8 x 1/2 SL Blk Oxide.....	117917			55. Screw, Cap, Socket Head, M6 X 16.....	117703		
8. Probe Retainer Cover, F 500 V3.....	22640192			56. Glass, Ceramic	129069		
9. Bimetallic Coil Assembly, F 500 V3	158178			57. Latch Bolt, Front Door	129208		
10. Washer, Flat M6 -.062 DIN 125A Plain.....	117947			58. Gasket, Round, LD2-360	220748		
11. Washer, Fender .250 x 1.500 dia.	118029			60. Front Door Handle, Curved.....	103712		
12. Sleeve, 10mm OD x 6mm ID x 10mm	128934			64. Glass Clip w/Gasket	153620		
13. Screw, M6 x 10, Button Head	117978			65. Screw, Cap, Low Socket Head, M6x8..	118292		
14. Washer, Hinge M6	117588			67. Inner Front.....	103846		
15. Approval / Serial Number Plate	226550			68. Bolt, Hex Head, Serr Flange M6x20	117117		
16. Bracket, Approval Plate, F 500 V3.....	226559			69. Steel Spring U Nut, M6.....	118145		
17. Locking Member, F 500 V3	105018			71. E-Clip, 5 mm	118272		
19. Bolt, Hex Head Serr Flange M6x12	117130			72.. Air Control Lever	225625		
20. Bolt, M8x30, Serr Flange Hex.....	117877			73. Bolt, Air Control Lever	118273		
21. Rear Air Riser, F 500 V3	105013			74. Air Valve, F 500 V3.....	105016		
23. Bolt, Hex Cap M6x60, DIN 933 8.8	99101			75. Inspection Cover	103856		
24. Set Screw, M6 x 40 Hex Drive.....	118288			77. Grate, F 500 V3	105015		
25. Bracket, Top/Side Pieces.....	103713			79. Gasket, Inspection Cover	220513		
26. Bolt, Hex Head Serr Flange M6x16 8.8.....	99625			82. Brick, Refractory, 9" x 4.50" x 1.25"	129082		
28. Hinge pin, New Style, Black.....	127075			83. Bolt, M6 x 50, Hex Hd.....	117097		
29. Wood Knob & Hardware	151991			84. Secondary Manifold.....	105007		
30. Handle, Cast Straight.....	10423892			85. Gasket, Secondary, Ledge.....	226410		
31. Spring, Door Handle.....	126164			86. Air Chamber Complete.....	158179		
32. Coiled Spring Pin, 5x24	117733			87. Gasket, Secondary, Base	226543		
33. Washer, Door Handle.....	117587			88. Refractory member, Left	226357		
34. Gasket, Round, LD2-375, Graphite.....	225695			89. Gasket, Expansion	226552		
35. Insulation Blanket, Burn Plates, F 500.....	128903			90. Catalytic Combustor	158000		
36. Side Burn Plate, F 500	103858			91. Refractory member, Top	226360		
39. Bolt, M8 x 16, Serr. Hex Flange.....	117874			92. Refractory member, Right	226358		
40. Inner Bottom, F 500	103841			93. Insulation Strip.....	226546		
41. Ashpan	128362			94. Gasket, Round, LD2-375 w/Adh.	225696		
42. Gasket, LD2-250.....	129644			96. Side Clip / Hang Tab.....	128401		
43. Ash House.....	103323			99. Probe Retainer	226400		
44. Heat Shield, Bottom.....	129192			100. Screw, Soc Set, cup pt, M6 X 10.....	04-117720		