

MASON-LITE

by MFI • Masonry Fireplace Industries, Inc.

Manufacturers of Modular Masonry

2022 Pricing & Ordering Information

Rev. 12/27/21



WEST END BRICK N' FIRE

1911 S Proforma Ave.

Ontario, CA 91761

Email: info@webricknfire.com

Phone: 800-843-3910

DuraVent



ENERVEX
VENTING DESIGN SOLUTIONS

Phone: 951-588-6816
Toll Free: 800-345-7078
Fax: 951-588-8046

www.mason-lite.com
info@mason-lite.com

Location:
Po Box 4338
Riverside, Ca 92514

Table of Contents

Page

Mason-Lite Fireplaces	3
Fire Box Kits	3
Mason-Lite Accessories	3
Height Kit	3
Arches	3
Combustion Air Kits	3
Mortar	3
Damper Blocks	4
Cast Iron Dampers	4
Metal Bases	4
Mason-Lite True Fire Brick Panels	4
Mason-Lite Pizza Ovens	4
Mason-Lite Semi-Custom Fireplaces	5
Linear Firebox Kits	5
Mason-Lite Masonry Chimney Systems	6
Mason-Lite Chimney Shrouds	6
Duravent DuraChimney II (12", 14", 16")	7
Duravent B-Vent Pipe (10" & 12")	7
Energex Chimney Fans	8
Mason-Lite Custom Fireplaces	9
Ordering Notes	9

Mason-Lite Standard Fire Boxes See ordering instruction: MSRP

Mason-Lite Wood Burning or Gas Firebox Kits (High Temp. Mortar Include)		Price/Ea	Weight (Lbs.)
MFP75	75" SEMI-CUSTOM NON UL127 FIREBOX KIT	\$9,905	2825
MFP63	63" FIREBOX KIT - Use 16" Class A UL103 Chimnev	\$6,800	2568
MFP49	49" FIREBOX KIT - Use 14" Class A UL103 Chimnev	\$4,615	1897
MFP44	44" FIREBOX KIT - Use 12" Class A UL103 Chimnev	\$4,282	1670
MFP39	39" FIREBOX KIT - Use 12" Class A UL103 Chimnev	\$3,952	1558
MFPST43	43" ST FIREBOX KIT - Use 16" Class A UL103 Chimnev	\$5,132	1606
MFP33	33" FIREBOX KIT - Use 12" Class A UL103 Chimnev	\$2,918	1318
Optional Virginia Decorative Gas Logs, Electronic Ignition with remote Inc. - match light avail. upon request			
VG24-NG	24" Virginia Decorative Gas Logs and NG Burner for use with MFP39	\$3,779	100
VG24-LP	24" Virginia Decorative Gas Logs and LP Burner for use with MFP39	\$3,398	100
VG30-NG	30" Virginia Decorative Gas Logs and NG Burner for use with MFP44	\$2,991	141
VG30-LP	30" Virginia Decorative Gas Logs and LP Burner for use with MFP44	\$3,714	141
VG36-NG	36" Virginia Decorative Gas Logs and NG Burner for use with MFP49	\$3,779	173
VG36-LP	36" Virginia Decorative Gas Logs and LP Burner for use with MFP49	\$3,714	173
VGST30-NG	30" See Thru Virginia Dec. Gas Logs and NG Burner for use with MFPST43	\$3,779	236
VGST30-LP	30" See Thru Virginia Dec. Gas Logs and LP Burner for use with MFPST43	\$3,714	236
VGXL48-NG	48" JUMBO Virginia Dec. Gas Logs and NG Burner for use with MFP63	\$5,157	410
VGXL48-LP	48" JUMBO Virginia Dec. Gas Logs and LP Burner for use with MFP63	\$5,209	410



Crated Package

Mason-Lite B-Vent Fire Boxes Gas Burning Only

Burner, Logset and Spill Switch included.

Gas B-Vent Firebox Kits			
MGFPST43	12" B-VENT GAS APPLIANCE w/ 30" Grand Canyon Gas Logs*	\$10,467	1624
MGFP49	10" B-VENT GAS APPLIANCE w/ 39" Peterson Gas Logs*	\$8,779	1946
MGFP44	10" B-VENT GAS APPLIANCE w/ 30" Peterson Gas Logs*	\$8,071	1778
MGFP39	10" B-VENT GAS APPLIANCE w/ 24" Peterson Gas Logs*	\$7,637	1760

Mason-Lite Vent Free Fire Boxes Gas Burning Only

Vent Free Firebox Kits			
MFP49VF	49" VENT FREE FIREBOX KIT - use any approved VF log set	\$3,779	1586
MFP44VF	44" VENT FREE FIREBOX KIT - use any approved VF log set	\$3,398	1457
MFP39VF	39" VENT FREE FIREBOX KIT - use any approved VF log set	\$2,991	1348
MFPST43VF	43" VENT FREE ST FIREBOX KIT - use any approved VF log set	\$3,714	1311
Optional Virginia Vent Free Gas Logs			
VGVF24-NG	Virginia Vent Free Gas Logs and LP Burner for use with MFP39VF	\$2,991	1348
VGVF24-LP	Virginia Vent Free Gas Logs and LP Burner for use with MFP39VF	\$3,714	1311
VGVF30-NG	Virginia Vent Free Gas Logs and LP Burner for use with MFP44VF	\$2,991	1348
VGVF30-LP	Virginia Vent Free Gas Logs and LP Burner for use with MFP44VF	\$3,714	1311

Mason-Lite Accessories

Combustion Air Kits			
MFP4-AK	4" Combustion Air Kit -3' Flexible Vent and Plastic Hood	\$183	4 lbs
MFPST-AK	4" Combustion Air Kit for MFPST43 AND Linear Units	\$183	4 lbs
Masonry Arches			
MFP-ARC	Masonry Arch - Fits up to and including MFP49	\$352	42 lbs
MFP-ARC63	Masonry Arch - Fits MFP63 - NON-STOCK ITEM	\$552	60 lbs
Refractory Mortar			
MFP530	50 LBS. BUCKET DRY MORTAR	\$200	50 lbs
Height Kits (Used to increase opening height by 8") (Flue size may need to be increased)			
MFP75-HK	HEIGHT KIT INCLUDES (1) MFP75-2, (1) MFP75-2A & (2) MFP75-3	\$1,203	279 lbs
MFP63-HK	HEIGHT KIT INCLUDES (1) MFP63-2, (1) MFP63-2A & (2) MFP63-3	\$1,015	255 lbs
MFP49-HK	HEIGHT KIT INCLUDES (1) MFP49-2 & (2) MFP49-3	\$601	239 lbs
MFP44-HK	HEIGHT KIT INCLUDES (1) MFP44-2 & (2) MFP44-3	\$586	228 lbs
MFP39-HK	HEIGHT KIT INCLUDES (1) MFP39-2 & (2) MFP39-3	\$562	219 lbs
MFPST43-HK	HEIGHT KIT INCLUDES (2) MFP43ST-3	\$488	162 lbs
MFP33-HK	HEIGHT KIT INCLUDES (1) MFP33-2 & (2) MFP33-3	\$533	215 lbs



Mason-Lite Accessories Continued

Metal Bases (For use with Wood Burning Fireplaces Being Installed on a Wood Floor)

Includes Insulation Blanket, All Thread, Brackets and (2) Cement Board Per Base

MFPB63	8" Structural Metal Base for 63" Firebox	\$1,968	219 lbs
MFPB49	6" Structural Metal Base for 49" Firebox	\$1,572	140 lbs
MFPB44	6" Structural Metal Base for 44" Firebox	\$1,330	128 lbs
MFPB43	8" Structural Metal Base for 43" See-Thru Firebox	\$1,474	115 lbs
MFPB39	6" Structural Metal Base for 39" Firebox	\$1,211	103 lbs
MFPB33	6" Structural Metal Base for 33" Firebox	\$1,067	85 lbs



Cast Iron Dampers

MFP-CC54	54" Cast Damper - for MFP63 (DAMPERS BLOCK - MFP63 Included)	\$1,164	109 lbs
MFP-CC42	42" Cast Damper - for MFP49 (DAMPERS BLOCK - MFP49 Included)	\$498	89 lbs
MFP-CC36	36" Cast Damper - for MFP44 (DAMPERS BLOCK - MFP44 Included)	\$435	82 lbs
MFP-CC30	30" Cast Damper - for MFP39 (DAMPERS BLOCK - MFP39 Included)	\$386	75 lbs
MFP-CC24	24" Cast Damper - for MFP33 (DAMPERS BLOCK - MFP33 Included)	\$297	60 lbs



Damper Blocks (If using Mason-Lite Fireplace Panels, Damper Blocks are not needed)

MFPDS63	Damper Block for MFP63	\$163	57 lbs
MFPDS49	Damper Block for MFP49	\$140	44 lbs
MFPDS44	Damper Block for MFP44	\$125	40 lbs
MFPDS39	Damper Block for MFP39	\$109	36 lbs
MFPDS33	Damper Block for MFP33	\$93	31 lbs

PureBurn EPA Phase II Qualified Burner

QWBN-44	PUREBURN GRATE/BURNER SET (Natural Gas) (for MFP44 and MFP49)	\$2,289	18 lbs
QWBP-44	PUREBURN GRATE/BURNER SET (Propane) (for MFP44 and MFP49)	\$2,289	18 lbs
QWBN-33	PUREBURN GRATE/BURNER SET (Natural Gas) (for MFP33 and MFP39)	\$1,716	14 lbs
QWBP-33	PUREBURN GRATE/BURNER SET (Propane) (for MFP33 and MFP39)	\$1,716	14 lbs
QWBN-63	PUREBURN GRATE/BURNER SET (Natural Gas) (for MFP63)	\$3,276	26 lbs
QWBP-63	PUREBURN GRATE/BURNER SET (Propane) (for MFP63)	\$3,276	26 lbs
QWB-EI	ELECTRONIC IGNITION FOR USE WITH PUREBURN UNITS	\$495	3 lbs

Mason-Lite Real Brick Panels & Fire Brick

(Color may vary between sets) (Not available for MFP75)

MSRP

Split Herringbone Brick Panels		Price/Ea	Weight
MFP63SHBL	Herringbone Brick Panels for 63" FP	\$3,406	563 lbs
MFP49SHBL	Herringbone Brick Panels for 49" FP	\$2,315	474 lbs
MFP44SHBL	Herringbone Brick Panels for 44" FP	\$2,207	418 lbs
MFP39SHBL	Herringbone Brick Panels for 39" FP	\$2,081	395 lbs
MFP33SHBL	Herringbone Brick Panels for 33" FP	\$1,862	334 lbs
MFPST43SHBL	Herringbone Brick Panel for 43" See-Thru FP	\$2,315	412 lbs
Split Running Bond Brick Panels			
MFP63SRBL	Split Running Bond Brick Panels for 63" FP	\$3,406	563 lbs
MFP49SRBL	Split Running Bond Brick Panels for 49" FP	\$2,315	474 lbs
MFP44SRBL	Split Running Bond Brick Panels for 44" FP	\$2,207	418 lbs
MFP39SRBL	Split Running Bond Brick Panels for 39" FP	\$2,081	395 lbs
MFP33SRBL	Split Running Bond Brick Panels for 33" FP	\$1,862	334 lbs
MFPST43SRBL	Split Running Bond Brick Panel for 43" See-Thru FP	\$2,315	412 lbs
Full Running Bond Brick Panels			
MFP63FRBL	Full Running Bond Brick Panels for 63" FP	\$3,197	602 lbs
MFP49FRBL	Full Running Bond Brick Panels for 49" FP	\$2,081	498 lbs
MFP44FRBL	Full Running Bond Brick Panels for 44" FP	\$1,998	448 lbs
MFP39FRBL	Full Running Bond Brick Panels for 39" FP	\$1,892	430 lbs
MFP33FRBL	Full Running Bond Brick Panels for 33" FP	\$1,699	364 lbs
MFPST43FRBL	Full Running Bond Brick Panel for 43" See-Thru FP	\$2,081	414 lbs

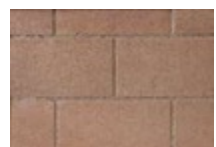
Add 20% to pricing for extended height panels. See order notes for details.
All panels available in Black for 15% additional charge. See order notes for details.



Split Herringbone



Split Running Bond
(shown in Black)



Full Running Bond

Mason-Lite Pizza Ovens

MPO-18	18" Toscana Pizza Oven - Inc. 16" Mas. Chim., Firebrick Panels	\$2,381	625 lbs
MPO-18WS	Toscana Pizza Oven Wood Storage	\$1,870	588 lbs
MPO-18D	Toscana Pizza Oven Door	\$839	18 lbs
MPO-24	24" Toscana Golia Pizza Oven - Inc. 16" Mas. Chim., Firebrick Panels	\$5,316	1699 lbs
MPO-24WS	Toscana Golia Oven Wood Storage	\$3,413	1161 lbs
MPO-24D	Toscana Golia Pizza Oven Door	\$1,336	35 lbs



Mason-Lite Linear Fireboxes & Burners

Mason Lite is here to meet your linear burner needs. We have designed our "Trough" models to conceal either our Opalescence Linear burner with LED light combo or Golden Blount's Alpine burner for a sleek and sophisticated look. For applications that require more burner flexibility, we offer the "No Trough" models.

These models will accept traditional "H" Burners and Logsets

Linear B-Vent Firebox Kits (Use MFPST-AK if Outside Airkits is needed)		MSRP	Weight
LMFP36-NT	36" LINEAR GAS FIREPLACE (NO TROUGH) - 12" B-VENT	\$6,088	1989
LMFP48-NT	48" LINEAR GAS FIREPLACE (NO TROUGH) - 12" B-VENT	\$7,527	2287
LMFP60-NT	60" LINEAR GAS FIREPLACE (NO TROUGH) - 12" B-VENT	\$8,514	2356
LMFP72-NT	72" LINEAR GAS FIREPLACE (NO TROUGH) - 12" B-VENT	\$12,529	2664
LMFP84-NT	84" LINEAR GAS FIREPLACE (NO TROUGH) - 12" B-VENT	\$14,268	2872
LMFP96-NT	96" LINEAR GAS FIREPLACE (NO TROUGH) - Dual 12" B-VENT	\$15,905	3135
LMFP108-NT	108" LINEAR GAS FIREPLACE (NO TROUGH) - Dual 12" B-VENT	\$17,416	3440
LMFP120-NT	120" LINEAR GAS FIREPLACE (NO TROUGH) - Dual 12" B-VENT	\$18,765	3805
LMFP36	36" LINEAR GAS FIREPLACE - 12" B-VENT	\$6,764	2134
LMFP48	48" LINEAR GAS FIREPLACE - 12" B-VENT	\$8,362	2335
LMFP60	60" LINEAR GAS FIREPLACE - 12" B-VENT	\$9,459	2550
LMFP72	72" LINEAR GAS FIREPLACE - 12" B-VENT	\$13,921	2980
LMFP84	84" LINEAR GAS FIREPLACE - 12" B-VENT	\$15,853	3132
LMFP96	96" LINEAR GAS FIREPLACE - Dual 12" B-VENT	\$17,671	3468
LMFP108	108" LINEAR GAS FIREPLACE - Dual 12" B-VENT	\$19,351	3818
LMFP120	120" LINEAR GAS FIREPLACE - Dual 12" B-VENT	\$20,849	4405



Opalescence Linear Burners (For use with Linear Units with Burner Trough)

LMBXXL-EN Includes Case, Burner, S.I.T. Controls w/Remote, LED Lights w/Remote, Rating Plate, Installation Manual, Flex line and fittings (Please add EP for Propane or LP)

		RETAIL	Weight
LMB36L-EN	36" Linear Drop-In Burner with LED Lights, For use with LMFP36	\$2,679	N/A
LMB48L-EN	48" Linear Drop-In Burner with LED Lights, For use with LMFP48	\$2,922	N/A
LMB60L-EN	60" Linear Drop-In Burner with LED Lights, For use with LMFP60	\$3,043	N/A
LMB72L-EN	72" Linear Drop-In Burner with LED Lights, For use with LMFP72	\$3,413	N/A
LMB84L-EN	84" Linear Drop-In Burner with LED Lights, For use with LMFP84	\$3,535	N/A
LMB96L-EN	96" Linear Drop-In Burner with LED Lights, For use with LMFP96	\$3,656	N/A
OPS48-LOGS	48" DRIFTWOOD LINEAR 9 PCS- LOGS ONLY	\$444	45
OPS60-LOGS	60" DRIFTWOOD LINEAR 11 PCS- LOGS ONLY	\$656	73
OPS72-LOGS	72" DRIFTWOOD LINEAR 13 PCS- LOGS ONLY	\$725	81
OPS84-LOGS	84" DRIFTWOOD LINEAR 16 PCS- LOGS ONLY	\$894	101
OPS96-LOGS	96" DRIFTWOOD LINEAR 18 PCS- LOGS ONLY	\$1,056	125
OPS-GLS-CL	1/2" Clear Reflective Fireglass 5 Lbs. (Min. 15 Lb order)	\$23	5

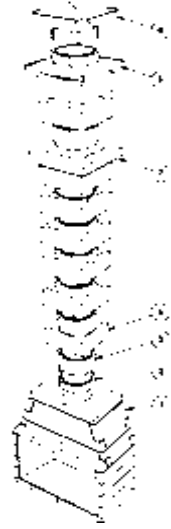


Alpine Linear Burners (For use with Linear Units w/ Burner Trough ; Includes Sky Tech Hi/Lo Remote)

		RETAIL	Weight
ALB30N-STP	30" Alpine Natural Gas Linear Burner (Spark-to-Pilot) (For LMFP36)	\$1,763	N/A
ALB30L-STP	30" Alpine Propane Linear Burner (Spark-to-Pilot) (For LMFP36)	\$1,763	N/A
ALB42N-STP	42" Alpine Natural Gas Linear Burner (Spark-to-Pilot) (For LMFP48)	\$2,200	N/A
ALB42L-STP	42" Alpine Propane Linear Burner (Spark-to-Pilot) (For LMFP48)	\$2,200	N/A
ALB48N-STP	48" Alpine Natural Gas Linear Burner (Spark-to-Pilot) (For LMFP60)	\$2,284	N/A
ALB48L-STP	48" Alpine Propane Linear Burner (Spark-to-Pilot) (For LMFP60)	\$2,284	N/A
ALB60N-STP	60" Alpine Natural Gas Linear Burner (Spark-to-Pilot) (For LMFP72)	\$2,384	N/A
ALB60L-STP	60" Alpine Propane Linear Burner (Spark-to-Pilot) (For LMFP72)	\$2,384	N/A
ALB72N-STP	72" Alpine Natural Gas Linear Burner (Spark-to-Pilot) (For LMFP84)	\$3,374	N/A
ALB72L-STP	72" Alpine Propane Linear Burner (Spark-to-Pilot) (For LMFP84)	\$3,374	N/A
ALB84N-STP	84" Alpine Natural Gas Linear Burner (Spark-to-Pilot) (For LMFP96)	\$4,179	N/A
ALB84L-STP	84" Alpine Propane Linear Burner (Spark-to-Pilot) (For LMFP96)	\$4,179	N/A
ALB96N-STP	96" Alpine Natural Gas Linear Burner (Spark-to-Pilot) (For LMFP108)	\$4,346	N/A
ALB96L-STP	96" Alpine Propane Linear Burner (Spark-to-Pilot) (For LMFP108)	\$4,346	N/A
ALB108N-STP	108" Alpine Natural Gas Linear Burner (Spark-to-Pilot) (For LMFP120)	\$4,347	N/A
ALB108L-STP	108" Alpine Propane Linear Burner (Spark-to-Pilot) (For LMFP120)	\$4,347	N/A



Chimney Systems/Components for *Mason-Lite*

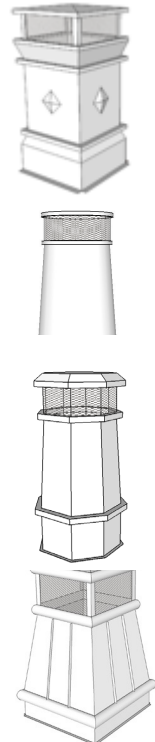


Mason-Lite Masonry Chimney System Kits (See Ordering Notes for Item List)		MSRP	
MCLS-814K	Mason-Lite 8' System	\$1,419	1225 lbs
MCLS-814P	Mason-Lite 4' Patio System	\$950	731 lbs
Mason-Lite Masonry Chimney Individual Components			
MCL-814	Inner Liner (Individual) 14" ID x 8" H	\$56	32 lbs
MCS-814	Outer Liner (Individual) 8" H	\$69	61 lbs
MCL-414	Inner Liner Starter (Individual) 14" ID x 4" H	\$40	14 lbs
MCSBI-814	Brick Ledge 4" H - NON-STOCK	\$295	72 lbs
MCSOS-814	Offset Elbow (30 Degrees) 14" ID x 4" H	\$189	90 lbs
MCL-CAP	Mason-Lite Chimney Cap	\$225	12 lbs
MCL-CAP-SS	Mason-Lite Chimney Cap Stainless Steel	\$328	8 lbs
MCL-CAP-C	Mason-Lite Chimney Cap Copper	\$1,016	8 lbs
MCS-CWN	Mason-Lite Chimney Crown	\$462	95 lbs
MC14-AP	14" ANCHOR PLATE/DAMPER - USE WITH MAS. CHIM. ONLY	\$248	15 lbs

Mason-Lite Premium Chimney Shrouds

Mason Lite's Decorative steel and copper chimney pots offer an alternative to unsightly factory flue caps and terminations. Available in 4 designs and in 4 colors of painted Kynar steel or in solid 16 oz. Copper, Mason Lite offers a chimney pot for any exterior.

Mason-Lite Chimney Shrouds - Dover (20" x 20" I.D. & 36" height)		RETAIL Price/Ea	Weight
SHDP6- NC	Dover Chimney Shroud - Natural Copper	\$1,824	200 lbs
SHDP6-MB	Dover Chimney Shroud - Matte Black	\$1,348	200 lbs
SHDP6-DB	Dover Chimney Shroud - Dark Bronze	\$1,348	200 lbs
SHDP6-SG	Dover Chimney Shroud - Storm Grey	\$1,348	200 lbs
Freight: \$200 for first. \$50 for each additional (Commercial Address. Continental US)(ADD \$100 FOR RESIDENTIAL)			
Mason-Lite Chimney Shrouds - Sussex (20" I.D. & 40" height)		RETAIL Price/Ea	Weight
SHDP8-NC	Sussex Chimney Shroud - Natural Copper	\$1,824	200 lbs
SHDP8-MB	Sussex Chimney Shroud - Matte Black	\$1,348	200 lbs
SHDP8-DB	Sussex Chimney Shroud - Dark Bronze	\$1,348	200 lbs
SHDP8-SG	Sussex Chimney Shroud - Storm Grey	\$1,348	200 lbs
Freight: \$200 for first. \$50 for each additional (Commercial Address. Continental US)(ADD \$100 FOR RESIDENTIAL)			
Mason-Lite Chimney Shrouds - Charleston (20" I.D. & 40" height)		RETAIL Price/Ea	Weight
SHDP9	Charleston Style Chimney Shroud - Natural Copper	\$1,824	200 lbs
SHDP9	Charleston Style Chimney Shroud - Matte Black	\$1,348	200 lbs
SHDP9	Charleston Style Chimney Shroud - Dark Bronze	\$1,348	200 lbs
SHDP9	Charleston Style Chimney Shroud - Storm Grey	\$1,348	200 lbs
Freight: \$200 for first. \$50 for each additional (Commercial Address. Continental US)(ADD \$100 FOR RESIDENTIAL)			
Mason-Lite Chimney Shrouds - Arlington (20" x 20" I.D. & 32" height)		RETAIL Price/Ea	Weight
SHDP10	Arlington Chimney Shroud - Natural Copper	\$1,824	200 lbs
SHDP10	Arlington Chimney Shroud - Matte Black	\$1,348	200 lbs
SHDP10	Arlington Chimney Shroud - Dark Bronze	\$1,348	200 lbs
SHDP10	Arlington Chimney Shroud - Storm Grey	\$1,348	200 lbs
Freight: \$200 for first. \$50 for each additional (Commercial Address. Continental US)(ADD \$100 FOR RESIDENTIAL)			
Mason-Lite Chimney Shrouds - Accessories		RETAIL Price/Ea	Weight
Needs to be Ordered with Shroud and Shipped Assembled to Shroud			
SHDPA12	12" Adapter	\$274	20 lbs
SHDPA14	14" Adapter	\$274	20 lbs
SHDPA16	16" Adapter	\$274	20 lbs



Class A Air-Cooled Chimney System for Masonry Fireplaces

12" Pipe & Acc. -For use w/ MFP44, MFP39, MFP33, & Custom Units

		RETAIL	
		Price/Ea	Weight
12DCA-16K	16 Foot Chimney Package	\$2,746	136 lbs
12DCA-24K	24 Foot Chimney Package	\$3,285	184 lbs

See Ordering Notes Pg 10 For Chimney Package Contents

12DCA-12	12" Chimney Pipe	\$126	10 lbs
12DCA-18	18" Chimney Pipe	\$150	10 lbs
12DCA-36	36" Chimney Pipe	\$230	21 lbs
12DCA-48	48" Chimney Pipe	\$269	24 lbs
12DCA-AP	Anchor Plate	\$371	12 lbs
12DCA-APD	Anchor Plate w/ Damper	\$628	27 lbs
12DCA-CTF	Chase Top Flashing*	\$309	4 lbs
12DCA-E15	15 Deg. Elbow	\$252	9 lbs
12DCA-E30	30 Deg. Elbow	\$252	9 lbs
12DCA-ES	Elbow Strap	\$135	5 lbs
12DCA-FS	Firestop	\$70	4 lbs
12DCA-IS	Attic Insulation Shield	\$517	5 lbs
12DCA-RRS	Roof Radiation Shield*	\$119	10 lbs
12DCA-SC	Storm Collar	\$45	5 lbs
12DCA-SS	Supplementary Support*	\$238	5 lbs
12DCA-ST	Stabilizer*	\$81	5 lbs
12DCA-VC1	Chimney Cap	\$369	18 lbs
12DCA-WS	Wall Strap*	\$141	5 lbs

14" Pipe & Acc. -For use w/ MFP49, MFP39-14, MFP44-14, & Custom Units

		RETAIL	
		Price/Ea	Weight
14DCA-16K	16 Foot Chimney Package	\$2,971	184 lbs
14DCA-24K	24 Foot Chimney Package	\$3,549	235 lbs

See Ordering Notes Pg 10 For Chimney Package Contents

14DCA-12	12" Chimney Pipe	\$139	9 lbs
14DCA-18	18" Chimney Pipe	\$163	12 lbs
14DCA-36	36" Chimney Pipe	\$269	24 lbs
14DCA-48	48" Chimney Pipe	\$289	24 lbs
14DCA-AP	Anchor Plate	\$292	15 lbs
14DCA-APD	Anchor Plate w/ Damper	\$684	19 lbs
14DCA-CTF	Chase Top Flashing*	\$219	15 lbs
14DCA-E15	15 Deg. Elbow	\$276	19 lbs
14DCA-E30	30 Deg. Elbow	\$276	19 lbs
14DCA-ES	Elbow Strap	\$139	5 lbs
14DCA-FS	Firestop	\$76	1 lbs
14DCA-IS	Attic Insulation Shield	\$539	12 lbs
14DCA-RRS	Roof Radiation Shield*	\$75	4 lbs
14DCA-SC	Storm Collar	\$48	3 lbs
14DCA-SS	Supplementary Support*	\$143	6 lbs
14DCA-ST	Stabilizer*	\$67	3 lbs
14DCA-VC1	Chimney Cap	\$432	23 lbs
14DCA-WS	Wall Strap*	\$146	7 lbs

16" Pipe & Acc. -For use w/ MFP63, MFPST43, & Custom Units

16DCA-16K	16 Foot Chimney Package	\$3,481	214 lbs
16DCA-24K	24 Foot Chimney Package	\$4,109	184 lbs

See Ordering Notes Pg 10 For Chimney Package Contents

16DCA-12	12" Chimney Pipe	\$156	12 lbs
16DCA-18	18" Chimney Pipe	\$193	13 lbs
16DCA-36	36" Chimney Pipe	\$302	28 lbs
16DCA-48	48" Chimney Pipe	\$314	31 lbs
16DCA-AP	Anchor Plate	\$428	17 lbs
16DCA-APD	Anchor Plate w/ Damper	\$728	26 lbs
16DCA-CTF	Chase Top Flashing*	\$523	15 lbs
16DCA-E15	15 Deg. Elbow	\$302	23 lbs
16DCA-E30	30 Deg. Elbow	\$302	23 lbs
16DCA-ES	Elbow Strap	\$142	5 lbs
16DCA-FS	Firestop	\$79	5 lbs
16DCA-IS	Attic Insulation Shield	\$543	12 lbs
16DCA-RRS	Roof Radiation Shield*	\$357	4 lbs
16DCA-SC	Storm Collar	\$48	3 lbs
16DCA-SS	Supplementary Support*	\$247	6 lbs
16DCA-ST	Stabilizer*	\$133	5 lbs
16DCA-VC1	Chimney Cap	\$495	24 lbs
16DCA-WS	Wall Strap*	\$217	7 lbs

B-Vent Chimney System

10" Round Gas Vent

10GV18	18" Length Round Rigid Pipe	\$167	37 lbs
10GV36	36" Length Round Rigid Pipe	\$236	47 lbs
10GV12A	12" Length Adjustable Pipe	\$174	61 lbs
10GVL90	90° Adj. Elbow (individually)	\$258	34 lbs
10GVL45	45° Adj. Elbow (individually)	\$229	42 lbs
10GVFS	Firestop Spacer	\$84	47 lbs
10GVSC	Storm Collar	\$25	34 lbs
10GVVT	High-Wind Cap	\$268	42 lbs
MFP-10DH	10" Anch. Plate/Draft Hood	\$482	47 lbs

12" Round Gas Vent

12GV18	18" Length Round Rigid Pipe	\$217	37 lbs
12GV36	36" Length Round Rigid Pipe	\$330	47 lbs
12GV12A	12" Length Adjustable Pipe	\$236	61 lbs
12GVL45	45° Adj. Elbow (individually)	\$267	34 lbs
12GVFS	Firestop Spacer	\$141	42 lbs
12GVSC	Storm Collar	\$29	47 lbs
12GVVT	High-Wind Cap	\$378	34 lbs
MFP-12DH	12" Anch. Plate/Draft Hood	\$495	42 lbs

Energex Fans & Accessories

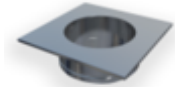
Chimney Fans		RETAIL	
EXH0022	RS 012 Fan & FSC5 Ctrl	\$3,531	37 lbs
EXH0023	RS 014 Fan & FSC5 Ctrl	\$3,796	47 lbs
EXH0024	RS 016 Fan & FSC5 Ctrl	\$5,511	61 lbs
EXHT0022	HTRS 012 Fan & FSC5 Ctrl	\$4,140	34 lbs
EXHT0023	HTRS 014 Fan & FSC5 Ctrl	\$4,447	42 lbs
EXHT0024	HTRS 016 Fan & FSC5 Ctrl	\$6,461	47 lbs



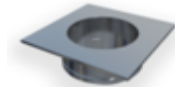
Chimney Fan Controls			
EXH1126-5	FSC5, Fan Speed Control	\$94	N/A
ADC100	Universal Control	\$1,022	N/A
ADC150	Modulating Control	\$2,150	N/A



Chimney Fan Adapters for Air Cooled Pipe			
FR3012A	12" Steel Chimney Adapter for RS 012 and RS 014 for Air Cooled Pipe	\$584	N/A
FR3014A	14" Steel Chimney Adapter for RS 012 and RS 014 for Air Cooled Pipe	\$584	N/A
FR3016A	16" Steel Chimney Adapter for RS 012 and RS 014 for Air Cooled Pipe	\$584	N/A
FR4012A	12" Steel Chimney Adapter for RS 016 for Air Cooled Pipe	\$584	N/A
FR4014A	14" Steel Chimney Adapter for RS 016 for Air Cooled Pipe	\$584	N/A
FR4016A	16" Steel Chimney Adapter for RS 016 for Air Cooled Pipe	\$584	N/A



Chimney Fan Adapters for Insulated Pipe			
FR3012	12" Steel Chimney Adapter for RS 012 and RS 014 for Insulated Pipe	\$569	N/A
FR3014	14" Steel Chimney Adapter for RS 012 and RS 014 for Insulated Pipe	\$569	N/A
FR3016	16" Steel Chimney Adapter for RS 012 and RS 014 for Insulated Pipe	\$569	N/A
FR4012	12" Steel Chimney Adapter for RS 016 for Insulated Pipe	\$569	N/A
FR4014	14" Steel Chimney Adapter for RS 016 for Insulated Pipe	\$569	N/A
FR4016	16" Steel Chimney Adapter for RS 016 for Insulated Pipe	\$585	N/A



Mechanical Fireplace Damper (Used with ADC100 or ADC150)(Gas Burning Only)			
EXH2810-24	10" MFD for RS 09 and RS 012 24V	\$2,491	N/A
EXH2810-120	10" MFD for RS 09 and RS 012 120V	\$2,491	N/A
EXH2812-24	12" MFD for RS 09 and RS 012 24V	\$2,660	N/A
EXH2812-120	12" MFD for RS 09 and RS 012 120V	\$2,660	N/A
EXH2910-24	10" MFD for RS 014 and RS 016 24V	\$2,660	N/A
EXH2910-120	10" MFD for RS 014 and RS 016 120V	\$2,660	N/A
EXH2912-24	12" MFD for RS 014 and RS 016 24V	\$2,842	N/A
EXH2912-120	12" MFD for RS 014 and RS 016 120V	\$2,842	N/A
EXH2914-24	14" MFD for RS 014 and RS 016 24V	\$2,938	N/A
EXH2914-120	14" MFD for RS 014 and RS 016 120V	\$2,938	N/A
EXH2916-24	16" MFD for RS 014 and RS 016 24V	\$3,237	N/A
EXH2916-120	16" MFD for RS 014 and RS 016 120V	\$3,237	N/A



Slip Ring For MFD Using Air Cooled Pipe			
ENE2930	10" Slip Ring For Air Cooled Chimney using Mech. Fireplace Dampers	\$601	N/A
ENE2932	12" Slip Ring For Air Cooled Chimney using Mech. Fireplace Dampers	\$601	N/A
ENE2934	14" Slip Ring For Air Cooled Chimney using Mech. Fireplace Dampers	\$601	N/A
ENE2936	16" Slip Ring For Air Cooled Chimney using Mech. Fireplace Dampers	\$601	N/A

Custom *Mason-Lite* Fireplaces Available



Design services available for custom fireplaces including linear, Rumford Style*, See Thru, 3-sided, island and corner configuration. These custom units are ready to assemble and require little to no further modification on site. Please visit Mason-Lite.com/customorder

Mason-Lite Ordering Notes

Fire Box Kits (All)

- Sizes listed are raw box dimensions. Finished dimensions are 3" less when lined with fire brick splits or panels. (Linear Models reflect actual finished opening)
- Fireboxes must be lined with optional brick panels or local firebrick handlaid.
- All kits come complete with refractory mortar, re-bar and T-Bar.

Brick Panels

- Made from actual fire brick.
- Panels are available for fire boxes ordered with the optional height kit. Add 20 % to price. Designate extended height panels by adding -X to the part number (ex. MFP39SHBL-X).
- Panels available in Red. Add 5% to price. Designate Red brick by adding -R to the part number (ex. MFP39SHBL-R)

Height Kit

- Includes firebox sections to increase face height by 8".
- Be sure to check flue sizing (diameter) based on the installation parameters (i.e. chimney height and new face dimensions) to insure proper draw.

Masonry Arches

- This option must be cut to size and fitted in per installation instructions.

Combustion Air Kits

- All interior wood burning fireplaces require outside make-up air at the fire box (building code requirement).
- Includes a closable fire box inlet, 3' flexible vent conduit and plastic outdoor hood.
- Fits pre-cut hole in firebox
- If using panels, a hole must be cut to accommodate the air kit. See complete instructions for further information.
- Square Sided units require a "See Thru" Airkit.

Damper Blocks

- 3 parts that fit inside the smoke dome to hold a cast iron damper. See instructions for further details.
- If using a cast iron throat damper AND brick panels, the damper block option is not required.

Metal Bases

- For installations on combustible floors. These ship with insulation blanket, hearth ember protector, brackets and hardware.
- Additional mounting hardware may be required depending upon the installation. Please see installation instructions for more information.

Mason-Lite Chimney System

- Mason-Lite refractory chimney system may be used on MFP33, MFP39, MFP44 and MFP49 with a maximum system height of 30' without additional support. The MFPST43, MFP63 or and MFP75 would need to be ordered specially to use dual 14" Masonry Chimney and would have a maximum system height of 20'.
- MCLS-814K 8' System includes MCL-414 (1 ea.), MCL-814 (12 ea.), MCS-814 (12 ea.) & 50 lb. refractory mortar.
- MCLS-814P 4' System includes MCL-414 (1 ea.), MCL-814 (6 ea.), MCS-814 (6 ea.) & 50 lb. refractory mortar.

Duravent Metal Chimney Packages

**System height includes 5' for standard Mason-lite fireplace*

- 16 ft. system (2 x XXDCA-48, 1 x XXDCA-36) with -APD, -IS, -RRS, -VC, -FS and -SC*
- 24 ft. system (4 x 12DCA-48, 1 x 12DCA-36) with -APD, -IS, -RRS, -VC, -FS and -SC*

Mason-Lite POS Brochures

- Available upon request.